

# ATLANTIS

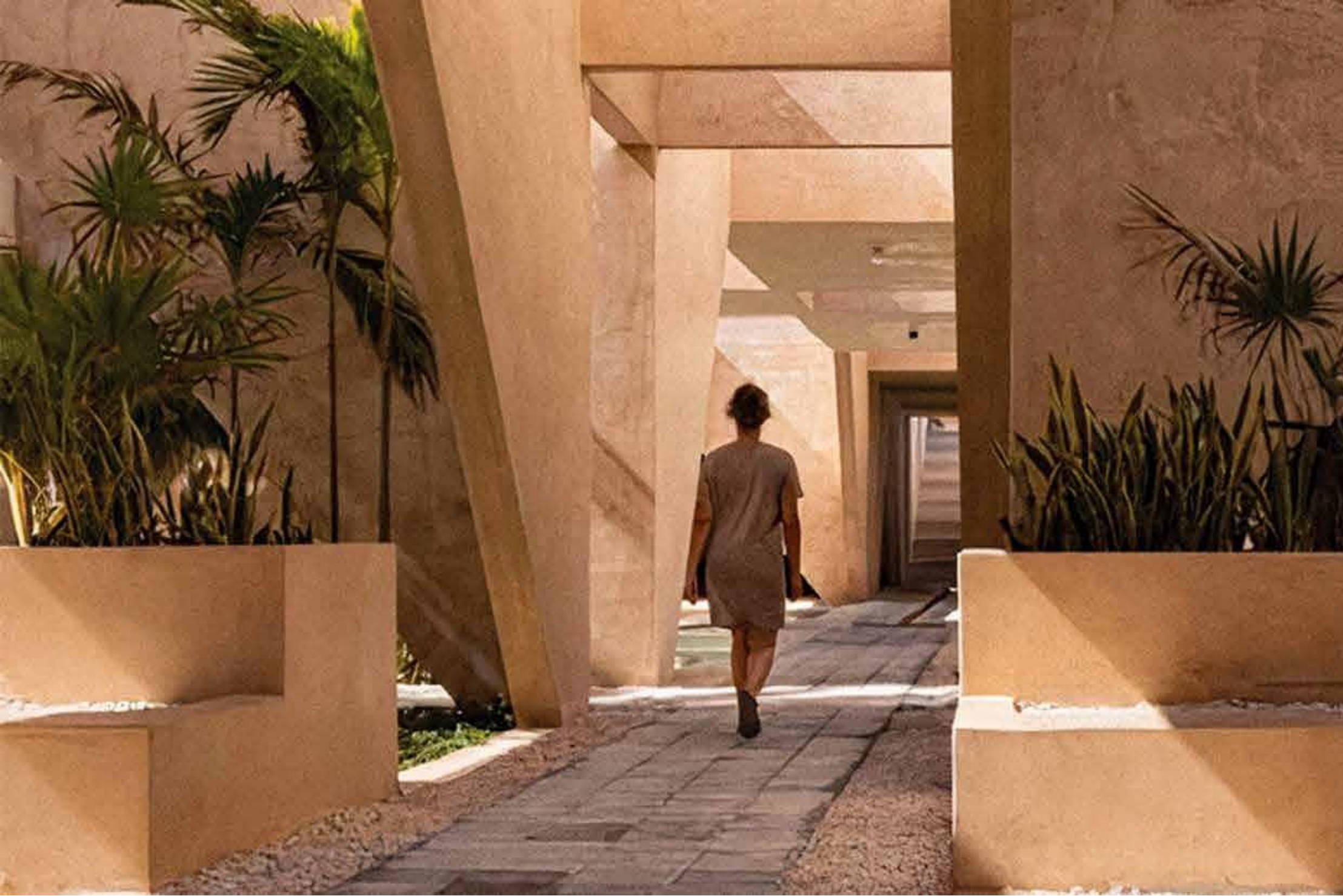
HURGHADA - RED SEA

Developed By  
**CASTELLO**  
Town

Al Mouhamadi Hoaidak Square  
In Front Of The Old VIC Beach  
Hurghada

15423  
castelloeg.com





**Castello** Development, a prominent figure in real estate and construction, is known for its commitment to excellence and innovation. Our journey begins with a vision to bring fresh ideas and a modern approach to development, setting a new standard for excellence. With a dynamic team at its core, Castello has Launched iconic projects such as Storia Del Mare and Atlantis.

# ATLANTIS

HURGHADA - RED SEA

## Luxuries Living Awaits



Atlantis stands as a testament to Castello's commitment to crafting exceptional living spaces in the heart of Hurghada.

Nestled in downtown Hurghada, Atlantis offers a unique blend of urban convenience and luxurious living ,Atlantis is on 41.500 m<sup>2</sup> with 40% foot print and 60% Landscape.

# Location Map

## Prime Location

**Atlantis** enjoys a coveted location just 5 minutes away from Hurghada International Airport, providing unparalleled convenience for travelers and residents alike. Its central position in downtown Hurghada ensures easy access to key landmarks, attractions, and amenities, 3 minutes away from the vibrant Mamsha, known for its bustling cafes, shops, and entertainment options. Additionally, Sheraton Street, renowned for its upscale dining and nightlife scene, is also within a 3-minute reach, offering residents a plenty of dining and leisure choices.





## *Architectural and Design Vision*

Inspired by the legendary allure of the mythical city, Atlantis incorporates castle-like features such as towers and fortified edges into its minimalist design, creating a striking visual narrative that captures the essence of modern royalty. The complex is elegantly laid out with ground floors and four typical floors, where each structure showcases a sophisticated simplicity enriched with subtle nods to historic fortifications.

### DISCLAIMER

1.This façade is subjected to minor amendments without prior notice. 2. Specification, materials and/or colors might be changed based on the final design and material availability, actual unit finishings for front windows, porches, FRONT VIEW terraces, loggia and exterior trim may vary by elevation styles and floor level. 3. This façade is for illustrative purposes



*Every Reasons to Find Happiness*

# Master Plan

- Hotel .
- Mixed Use Building .
- Building A .
- Building B .
- Building C .



# Building

# A



**A** Reception

**CASTELLO**  
DEVELOPMENT

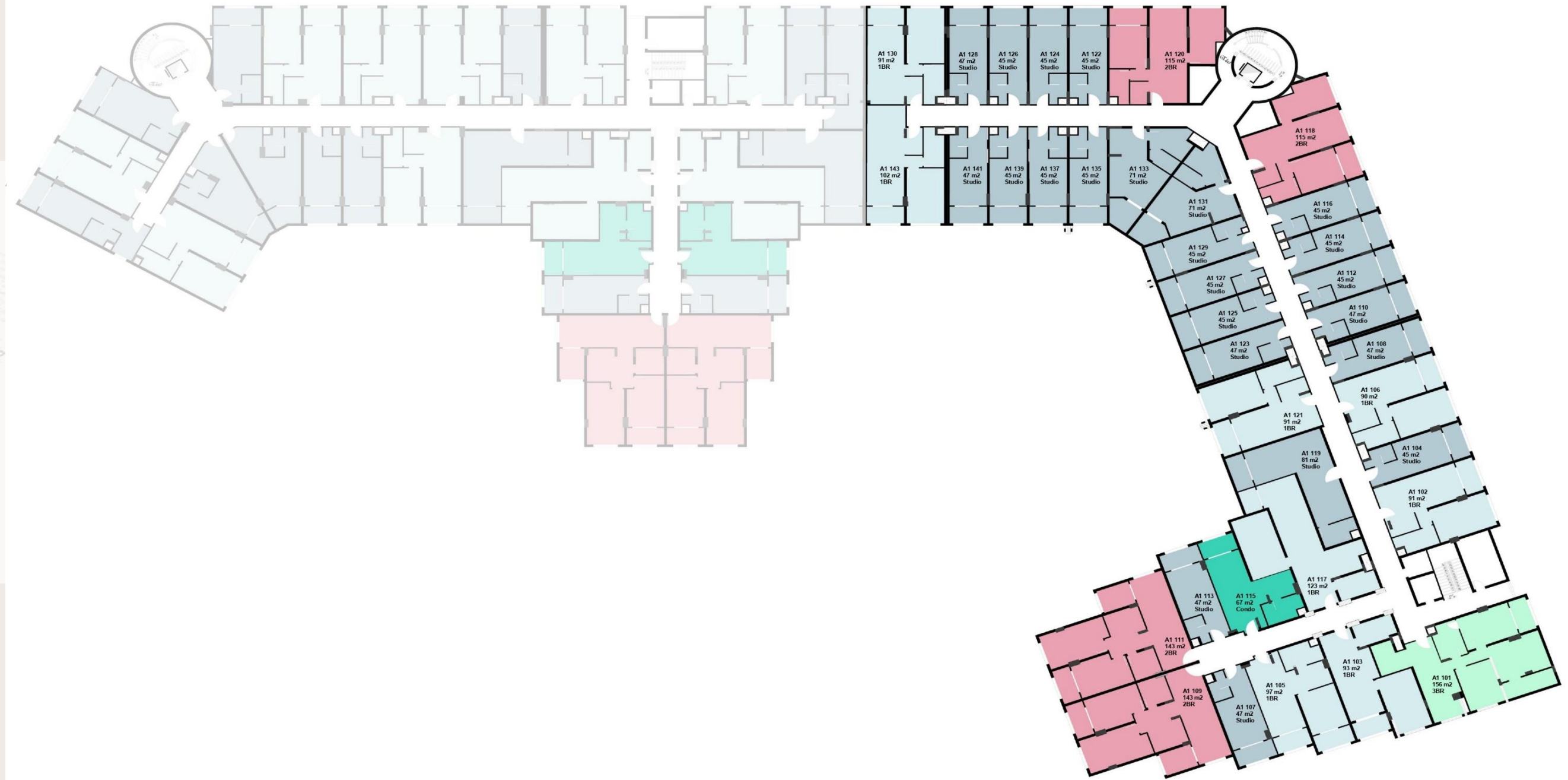
*DISCLAIMER*

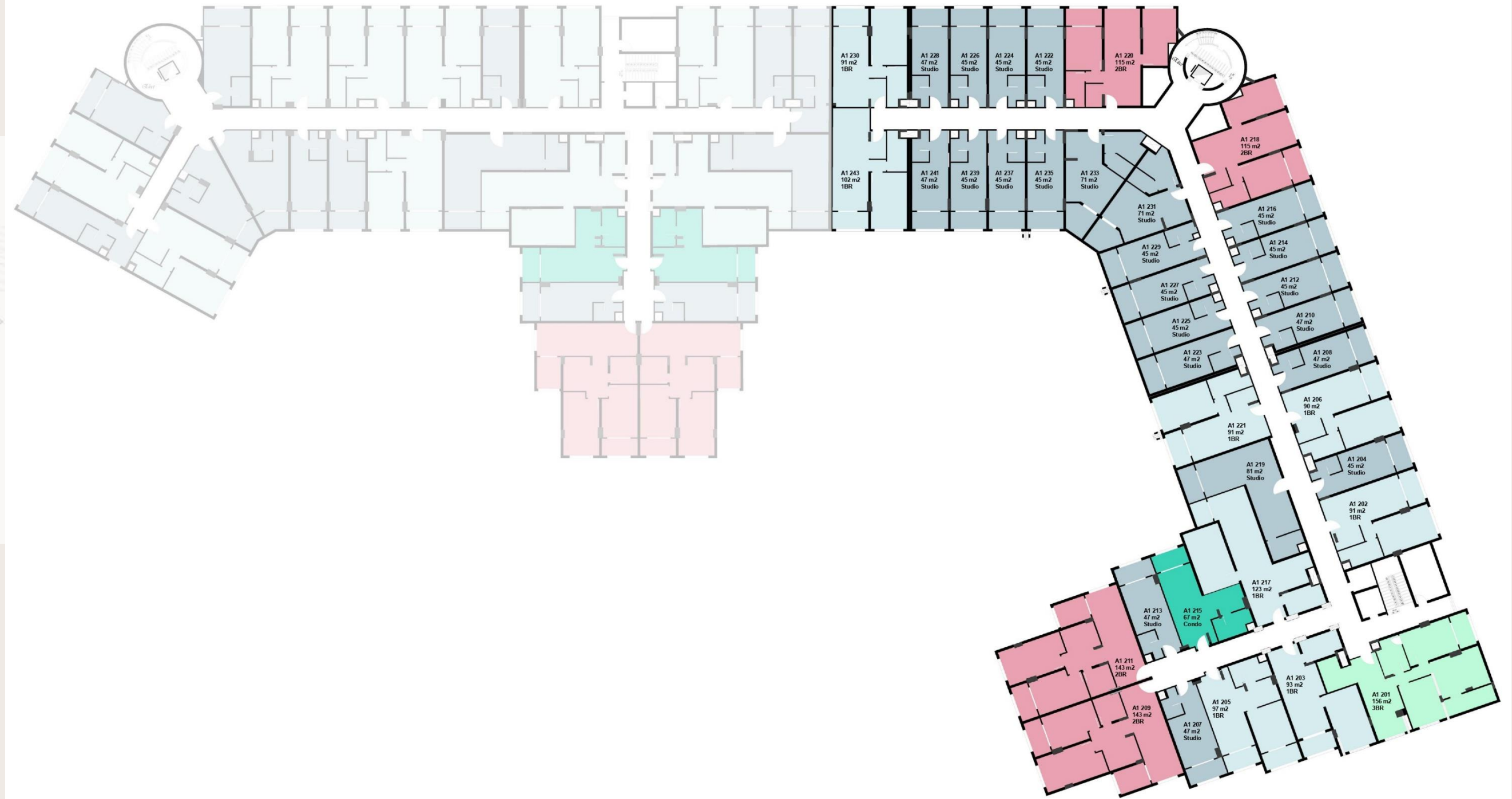
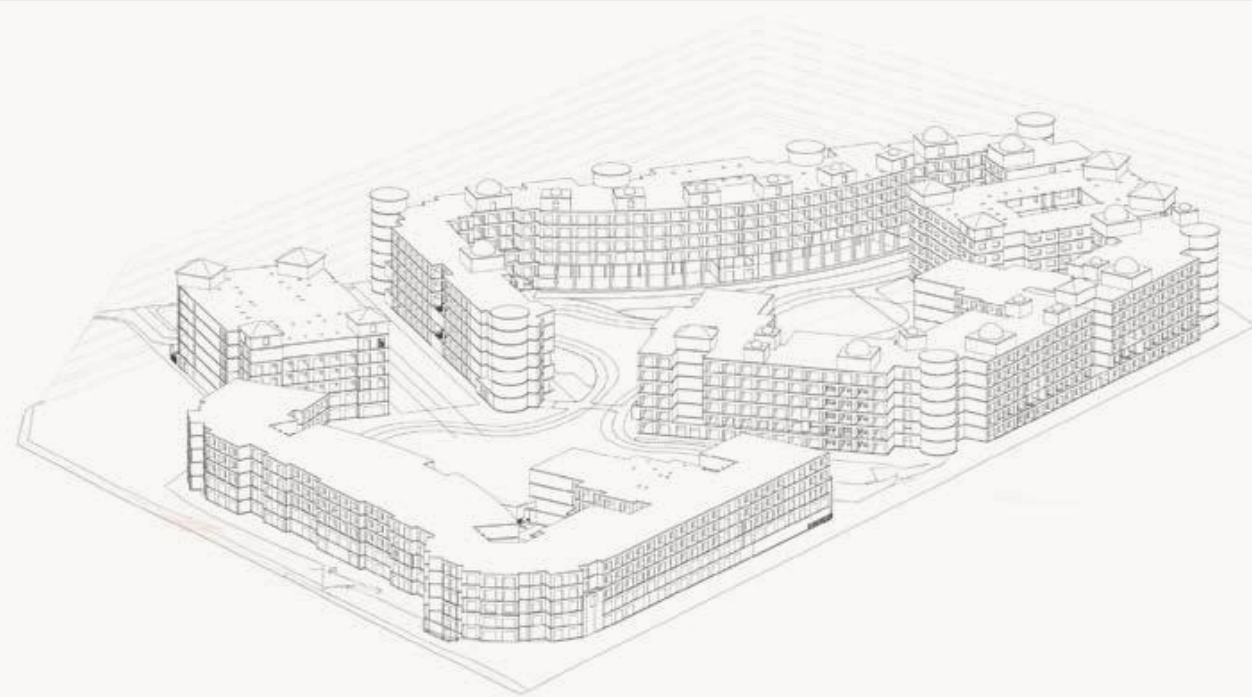
1.This façade is subjected to minor amendments without prior notice. 2. Specification, materials and/or colors might be changed based on the final design and material availability, actual unit finishings for front windows, porches, FRONT VIEW terraces, loggia and exterior trim may vary by elevation styles and floor level. 3. This façade is for illustrative purposes





# Building A First Floor





Building A  
Typical Floor

An aerial photograph of rolling hills at sunset. The sky is filled with soft, golden light, and the sun is low on the horizon, casting long, warm shadows across the landscape. The hills are covered in sparse vegetation, and the overall color palette is dominated by warm oranges, yellows, and soft blues.

Building A  
UNIT TYPES

# Building A

## STUDIO

Discover our stylish studio units, ranging from 36 m<sup>2</sup> to 68 m<sup>2</sup>, perfect for singles and young professionals. Each unit is designed to maximize space with a modern, open-plan layout. Enjoy a fully equipped kitchenette, comfortable living area, and ample storage.



## 1 Bed Rooms

Discover our spacious 1-bedroom units, ranging from 68 m<sup>2</sup> to 106 m<sup>2</sup>. Ideal for singles or couples, these units offer a generous bedroom, a modern kitchen, and a comfortable living area. Each unit is designed with high-quality finishes, plenty of natural light, and ample storage.



## 2 Bed Rooms

Explore our spacious 2-bedroom units, ranging from 97 m<sup>2</sup> to 137 m<sup>2</sup>. Perfect for families or roommates, these units feature two comfortable bedrooms, a modern kitchen, and an inviting living area. Designed with high-quality finishes and ample storage, each unit ensures a stylish and practical living space. Located in desirable areas,



## 3 Bed Rooms

Discover our luxurious 3-bedroom units, ranging from 143 m<sup>2</sup> to 215 m<sup>2</sup>. Ideal for families or those needing extra space, these units feature three spacious bedrooms, a modern kitchen, and a generous living area. Each unit is designed with high-quality finishes, ample storage, and plenty of natural light.



# Building *B*



## DISCLAIMER

1.This façade is subjected to minor amendments without prior notice. 2. Specification, materials and/or colors might be changed based on the final design and material availability, actual unit finishings for front windows, porches, FRONT VIEW terraces, loggia and exterior trim may vary by elevation styles and floor level. 3. This façade is for illustrative purposes



Building B  
Ground Floor

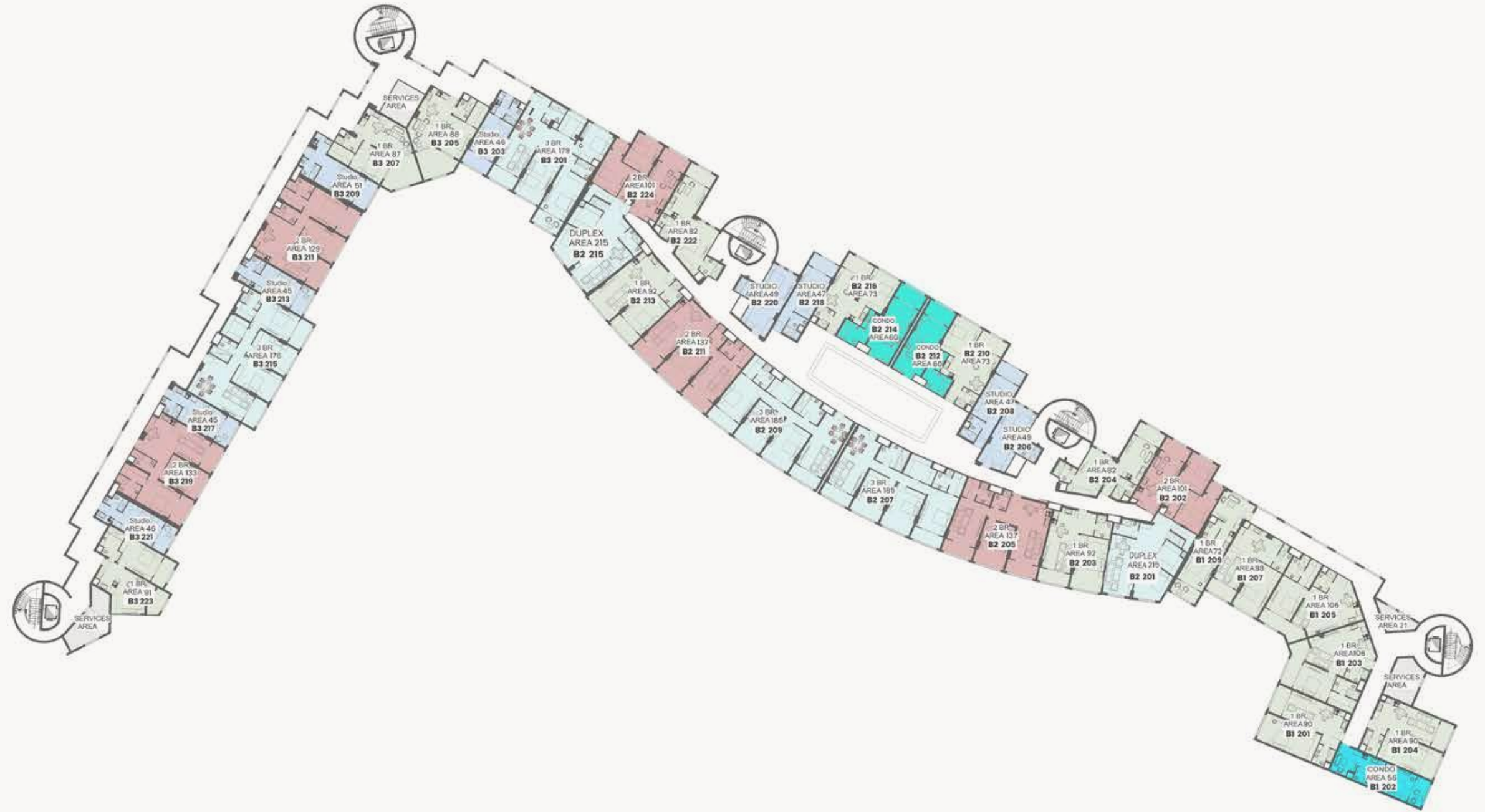
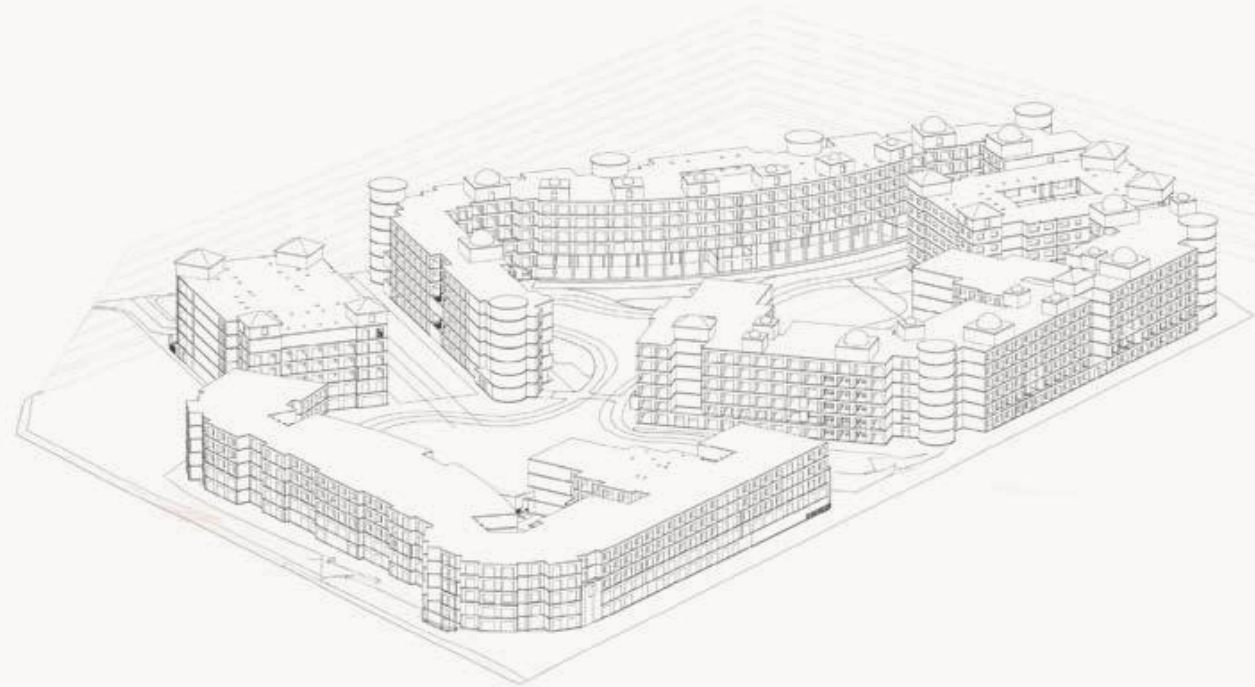




# Building B First Floor







Building B  
Typical Floor

An aerial photograph of rolling hills under a dramatic, cloudy sky at sunset or sunrise. The hills are covered in sparse vegetation and are bathed in the warm, golden light of the low sun. The text 'Building B' is written in a large, white, serif font, and 'UNIT TYPES' is written below it in a smaller, white, sans-serif font.

Building B  
UNIT TYPES

# Building B

## STUDIO

Discover our stylish studio units, ranging from 36 m<sup>2</sup> to 68 m<sup>2</sup>, perfect for singles and young professionals. Each unit is designed to maximize space with a modern, open-plan layout. Enjoy a fully equipped kitchenette, comfortable living area, and ample storage.



## CONDO

Explore our elegant condo units, ranging from 49 m<sup>2</sup> to 60 m<sup>2</sup>. Perfect for singles or couples, these units offer a spacious bedroom, a modern kitchen, and a cozy living area. Designed with comfort and style in mind, each unit features high-quality finishes and ample storage.



# Building B

## 1 Bed Rooms

Discover our spacious 1-bedroom units, ranging from 68 m<sup>2</sup> to 106 m<sup>2</sup>. Ideal for singles or couples, these units offer a generous bedroom, a modern kitchen, and a comfortable living area. Each unit is designed with high-quality finishes, plenty of natural light, and ample storage.



## 2 Bed Rooms

Explore our spacious 2-bedroom units, ranging from 97 m<sup>2</sup> to 137 m<sup>2</sup>. Perfect for families or roommates, these units feature two comfortable bedrooms, a modern kitchen, and an inviting living area. Designed with high-quality finishes and ample storage, each unit ensures a stylish and practical living space. Located in desirable areas,



# Building B

## 3 Bed Rooms

Discover our luxurious 3-bedroom units, ranging from 143 m<sup>2</sup> to 215 m<sup>2</sup>. Ideal for families or those needing extra space, these units feature three spacious bedrooms, a modern kitchen, and a generous living area. Each unit is designed with high-quality finishes, ample storage, and plenty of natural light.



# Building B

## DUPLEX

Experience the elegance of our duplex units, ranging from 143 m<sup>2</sup> to 215 m<sup>2</sup>. Perfect for families or those seeking extra space, these units feature two levels of spacious living. Enjoy multiple bedrooms, a modern kitchen, and expansive living areas designed with high-quality finishes and abundant natural light.





# Building C

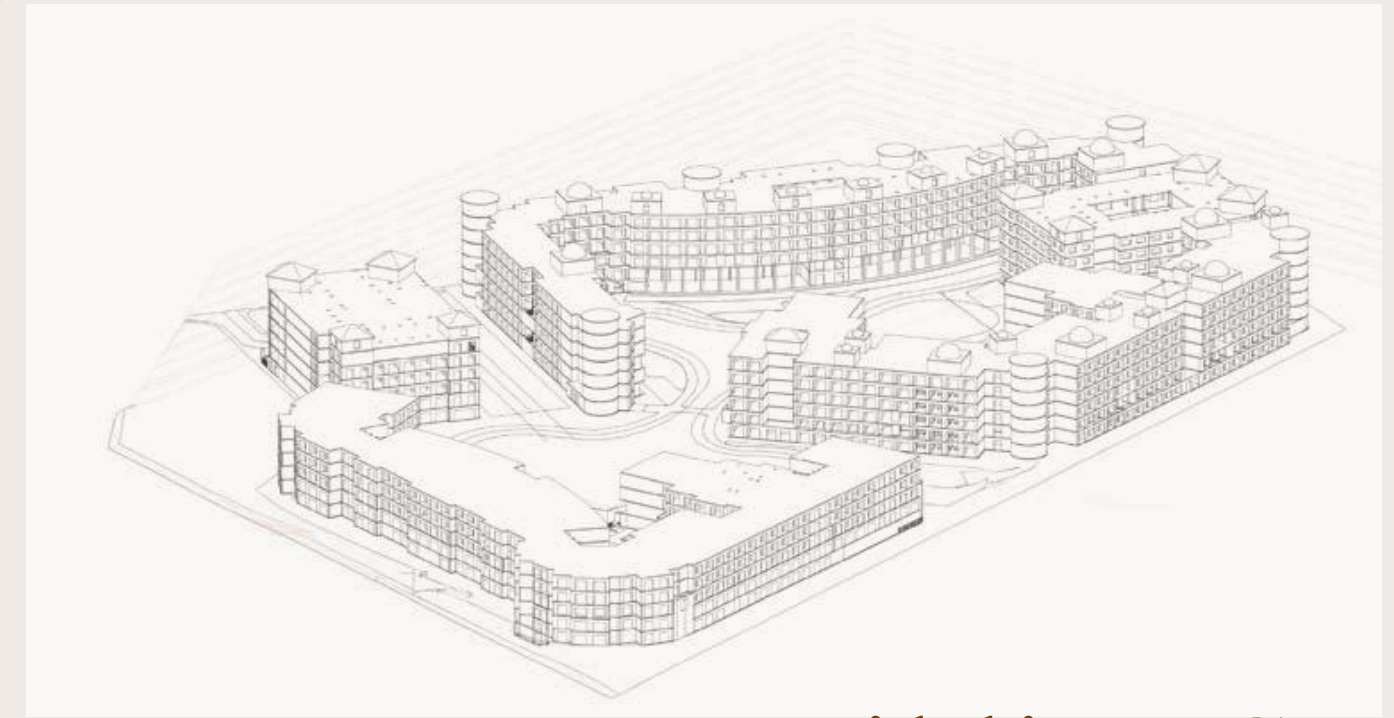
**DISCLAIMER**

1.This façade is subjected to minor amendments without prior notice. 2. Specification, materials and/or colors might be changed based on the final design and material availability, actual unit finishings for front windows, porches, FRONT VIEW terraces, loggia and exterior trim may vary by elevation styles and floor level. 3. This façade is for illustrative purposes

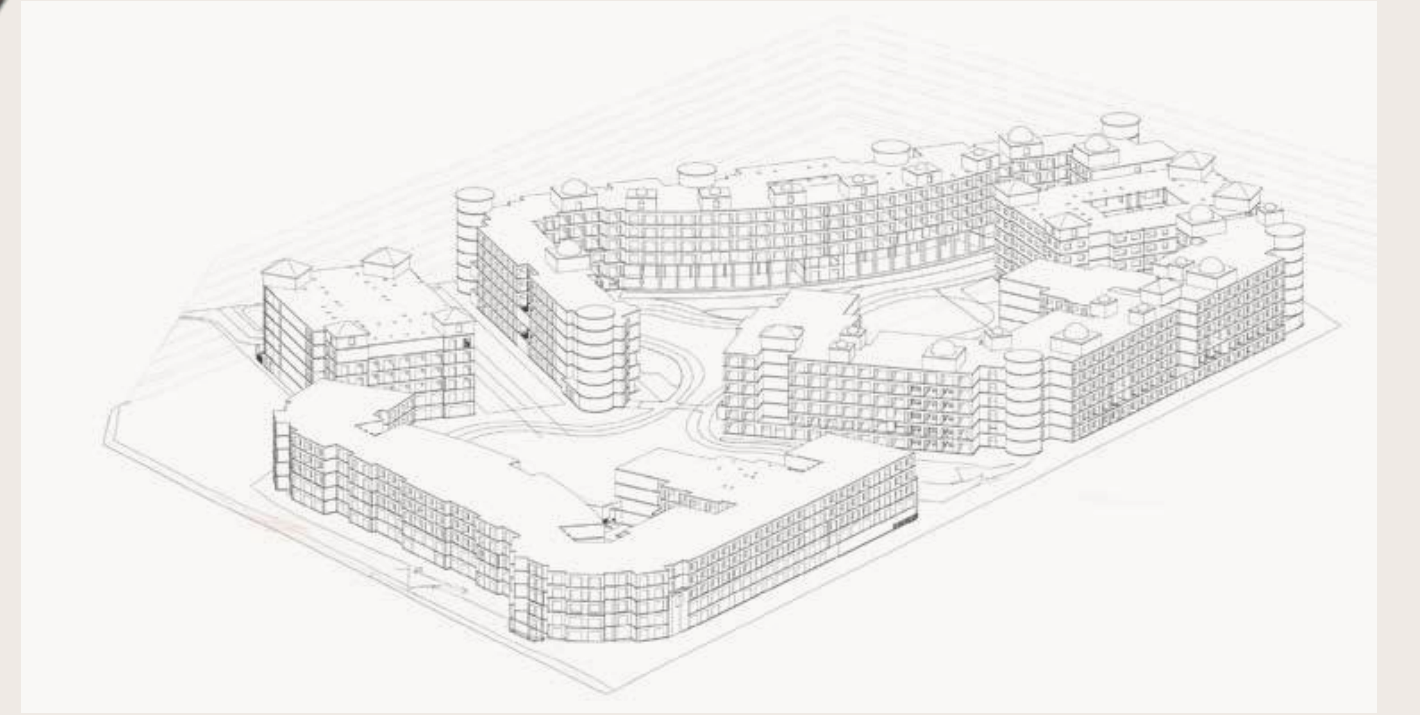


Building C  
Ground Floor





Building C  
First Floor



Building C  
Typical Floor

An aerial photograph of rolling hills under a dramatic, low-angle sky. The hills are covered in sparse vegetation and are bathed in the warm, golden light of either sunrise or sunset. The sky is filled with soft, wispy clouds, and the overall color palette is dominated by blues, greys, and warm oranges. The text 'Building C' is written in a large, elegant serif font, and 'UNIT TYPES' is written below it in a smaller, all-caps sans-serif font, both in white.

Building C  
UNIT TYPES

# Building C

## STUDIO

Discover our stylish studio units, ranging from 36 m<sup>2</sup> to 68 m<sup>2</sup>, perfect for singles and young professionals. Each unit is designed to maximize space with a modern, open-plan layout. Enjoy a fully equipped kitchenette, comfortable living area, and ample storage.



## 1 Bed Rooms

Discover our spacious 1-bedroom units, ranging from 68 m<sup>2</sup> to 106 m<sup>2</sup>. Ideal for singles or couples, these units offer a generous bedroom, a modern kitchen, and a comfortable living area. Each unit is designed with high-quality finishes, plenty of natural light, and ample storage.



# 2 Bed Rooms

Explore our spacious 2-bedroom units, ranging from 97 m<sup>2</sup> to 137 m<sup>2</sup>. Perfect for families or roommates, these units feature two comfortable bedrooms, a modern kitchen, and an inviting living area. Designed with high-quality finishes and ample storage, each unit ensures a stylish and practical living space. Located in desirable areas,



# LOFT

Explore our elegant loft units, ranging from 80 m<sup>2</sup> to 110 m<sup>2</sup>. Perfect for singles or couples, these units offer a spacious bedroom, a modern kitchen, and a cozy living area. Designed with comfort and style in mind, each unit features high-quality finishes and ample storage.



Ground Floor



First Floor

A close-up, artistic photograph of a woman's hands holding a book with a dark cover and vibrant, intricate patterns in teal, orange, and white. The woman's face is partially visible in profile on the right side of the frame, looking down at the book. The background is a soft, out-of-focus white. The text "Every Reason to Cherish Moments" is overlaid in a white, serif font on the left side of the image.

Every Reason to Cherish Moments



# Exteriors





# Interiors

# Interiors



# Interiors



# Interiors

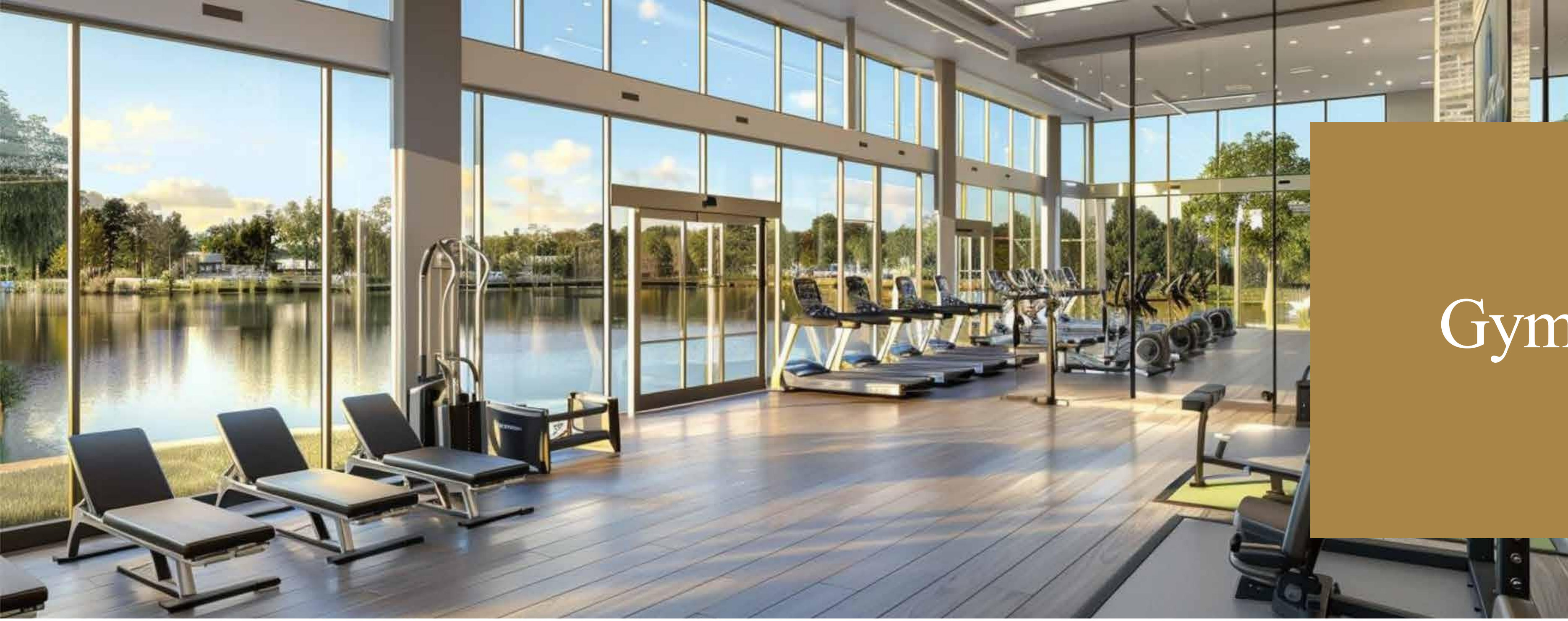


# Interiors



# Interiors





Gym

Spa







Restaurant

Cafe





Indoor Pool

A woman with long blonde hair, wearing a peach-colored long-sleeved dress and sunglasses, stands on the deck of a sailboat. She is looking out over the ocean under a blue sky with scattered white clouds. The sailboat's white sail is visible on the left side of the frame.

Create Memories in your New Place



15423

Al Mouhama di Hoaidak Square - In Front Of The Old VIC Beach  
Hurghada  
[castelloeg.com](http://castelloeg.com)